

# RadEye GF

## Personal Radiation Detector



### RadEye GF – The next generation of radiation meters

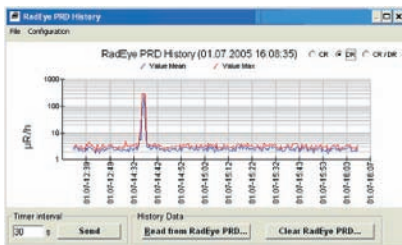
The RadEye GF is a light-weight and very rugged instrument designed for quick and reliable measurement of gamma dose rates. Modern electronic circuitry guarantees excellent linearity over 7 decades of radiation intensity: from background level to 300 R/h - with unlimited overrange indication.

The high-quality counter tube in conjunction with the non-metal instrument housing allows detection and reliable measurements down to very low gamma energies - a crucial feature in respect to accidents involving medical isotopes or Am-241 (a component of smoke detectors).

- Rugged and reliable
- Menu driven interface - no manuals needed
- Large, clear, backlit display for error free readings
- High sensitivity to low energy gamma radiation in harsh environments
- Durable - shock resistant design
- 2 x AAA batteries provide 900 hours of operation life
- Built in vibrator alarm and earphone connector for operation in noisy environment
- Low weight - only 160 g

All essential functions can be easily accessed even while wearing protective gloves. The alarm-LED can be seen while the instrument is worn in a belt-holster. The instrument is also equipped with a built-in vibrator and an earphone- output for silent alarming or use in very noisy environment.

RadEye PC-Software for training and analysis All settings and the data analysis can be done by an optional Windows™ -based PC-software and an accompanying reader device. Changes in configuration, occurring alarms and errors are saved in the RadEye memory. These events can be read out via the option "logbook". In order to allow retrospective analysis of any event, the latest 1600 dose rate values are stored in the internal data memory. For each time interval both the mean and the maximum measurement values are stored.



RadEye GF history data



RadEye belt holster with openings for alarm-LED and earphone connector



RadEye dash board adapter for mobile area survey applications including optional charging of the batteries

# RadEye GF

Large graphic display with clear prefix and bar-graph



### Background measurement

Alarm thresholds - two triangles in the bar-graph  
Indication low



### Approaching a source

Alarm thresholds - not yet exceeded  
Trend arrow indicates increasing radiation level



### Alarm level 1 exceeded

"Alarm 1" sign and "speaker" sign show up  
Absence of trend arrow indicates stable radiation level - reading can be taken

### Menu Operation

All factory-set parameters can be easily modified on the RadEye or using optional software. These menu operations can also be partially or fully blocked to simplify the instrument and to avoid any faulty operation. Navigation is made easy by a clear and intuitive user concept.



- Rugged and reliable - Removable rubber sleeve for extra protection
- Large display for clear information
- Bright LED-illumination allows operation in smoke and darkness
- Weighs only 160 g (96 x 61 x 31 mm) - true "pocket meter"
- Top alarm indication - can be operated in holster
- Low power technology - 900 h operation time on 2 AAA cells
- 1600 data points (mean/max.) - allows retrospective analysis
- PC-software with real-time graph - perfect for tutorial and training
- Adaptable user interface - can be optimized to application
- Earphone output for noisy environment
- Designed to exceed ANSI 42.33 test criteria



Cost saving with rechargeable batteries



Thermo Fisher Scientific - a reliable partner of firebrigades and first responders worldwide

## SPECIFICATIONS

Detector	Energy compensated GM-tube
Measuring Range	500 µR/h - 300 R/h
Energy Range	48 keV - 3 MeV
Count Rate for Cs-137 (662 keV)	1.3 cps per mR/h

