

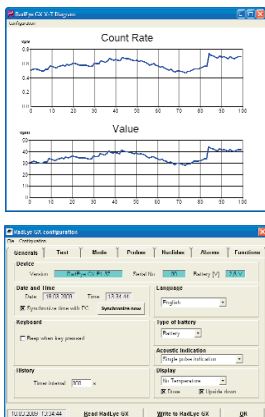
RadEye GX

Multi-Purpose Survey Meter



The RadEye GX is a modern and Compact multi purpose meter for external Geiger Mueller counter tubes.

- Most Thermo Scientific GM probes can be connected
- Up to 16 different probe configurations are selectable in a submenu
- Easy change of the detector type at the push of a button
- Weighs only 160 g, 110 mm x 67 mm x 62 mm, with rubber protection, without cable
- Versatile operation modes:
 - Scaler / Timer with preset count and preset time for sample measurements
 - Continuous ratemeter mode for frisker operation
 - Dose rate mode
- Existing GM tubes are adaptable by the customer



The RadEye GX is a modern compact multi-purpose survey meter for external Geiger Mueller counter tubes. General count rate and surface contamination measurements can be performed as well as dose rate measurements.

As part of the growing RadEye product family of high-end stand-alone meters, the RadEye GX is designed to exceed the most demanding user expectations.

Due to the clear and large display all essential functions and software parameters can be easily accessed.

The display and the alarm-LED can be seen while the instrument is worn in the transparent case.

All settings and the data analysis can be done by an optional Windows™-based PC-software and a reader device. The last 1500 mean and maximum values of the count rate or dose rate are recorded internally and can be read out via a serial interface. Additionally the RadEye GX logs the last 250 alarms, error messages and changes of the configuration.

RadEye GX Accessories



Transparent case with strap
425067044



Holder with vacuum cup and
goose neck # **425522005**



Battery lid # **425067034**
for inductive chargers



Right-angle-plug
KT 162245107



Desktop holder and inductive
charger #



Inductive charger
425067065

RadEye GX Technical Data

Measured quantities	Count rate (cps, cpm), surface contamination (Bq, dps, dpm, Bq/cm ²), dose rate (R/h, Sv/h, rem/h)
Background subtraction	In count rate and contamination mode
Measuring range	Default: 10,000 cps - extendable by individual probe calibration
Probe cables	RG 58, Max. 1.5 m – MHV connector
High voltage range	350 V ... 1100 V with output impedance 1 MΩ
Probe library	16 counter tubes with adjustable high voltage, calibration factor, dead time correction, overload threshold, detector area and timeout for detector failure. Default values for HP-190A, HP-210, HP-270, HP-290, HP-360 and EP-15 are factory preset
Alarm threshold	Two alarm thresholds for count rate, activity, dose and dose rate each.
Audible alarm intensity	80 dB at a distance of 30 cm
Working temperature	-20°C ... + 50°C
Storage temperature	-25°C ... + 50°C
Ambient air pressure	700 hPa ... 1100 hPa
Relative humidity	10 ... 90 % at 35°C not condensing
Operating voltage	1,8 ... 4 V, battery low voltage starting from 2.1 V
Scaler/Timer	Preset count, preset time
EMC	Disturbance emission: EN 61000-6-3, Immunity : EN 61000-6-2
Size	110 mm x 67 mm x 62 mm, with rubber protection, without cable
Weight	Around 160 g including AAA cells and protection sleeve
Internal memory	The last 1500 measured values are saved and can be read out via PC program. Max and mean value of count rate and dose rate. The time interval is factory preset to 120 s by default. Logbook with 250 entries for changes of configuration, occurring alarms and errors.
Averaging filters	Dose Rate filter type: Advanced Digital Filter (ADF), Digital RC-Filter with time constant, 1s...180 s, depending on dose rate and dose rate changing.
Battery life time	Typ. 500 h using two alkaline AAA cells, typ. 250 h using two 800 mAh NiMH rechargeable batteries

This specification sheet is for informational purposes only and is subject to change without notice. Thermo Fisher Scientific makes no warranties, expressed or implied, in this product summary.
© 2009 Thermo Fisher Scientific Inc. All rights reserved. LITRadEyeGX-e-V1.0_03July09

